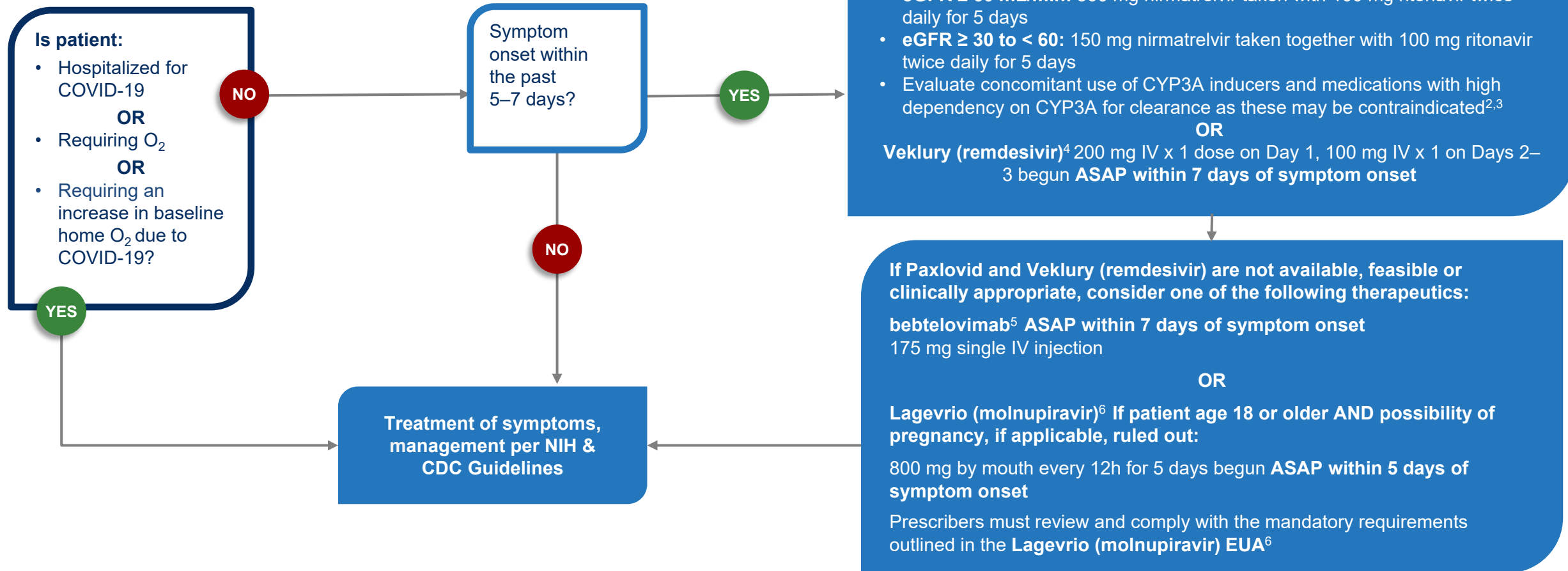


# COVID-19 Outpatient Therapeutics

## Clinical Decision Aid for Ages 12+ years

Adult or pediatric patient (ages 12 and older weighing at least 40 kg) with mild to moderate COVID-19 and at high risk for progression to severe disease



### References:

<sup>1</sup> NIH's COVID-19 Treatment Guidelines Therapeutic Management of Nonhospitalized Adults With COVID-19. <https://www.covid19treatmentguidelines.nih.gov/therapies/statement-on-therapies-for-high-risk-nonhospitalized-patients/>

<sup>2</sup> Paxlovid EUA. <https://www.fda.gov/media/155050/download>

<sup>3</sup> NIH's COVID-19 Treatment Guidelines Panel: Ritonavir-Boosted Nirmatrelvir (Paxlovid). <https://www.covid19treatmentguidelines.nih.gov/therapies/antiviral-therapy/ritonavir-boosted-nirmatrelvir--paxlovid/>

<sup>4</sup> Veklury (remdesivir) Prescribing Information. [https://www.gilead.com/-/media/files/pdfs/medicines/covid-19/veklury/veklury\\_pi.pdf](https://www.gilead.com/-/media/files/pdfs/medicines/covid-19/veklury/veklury_pi.pdf)

<sup>5</sup> Bebtelovimab EUA. <https://www.fda.gov/media/156152/download>

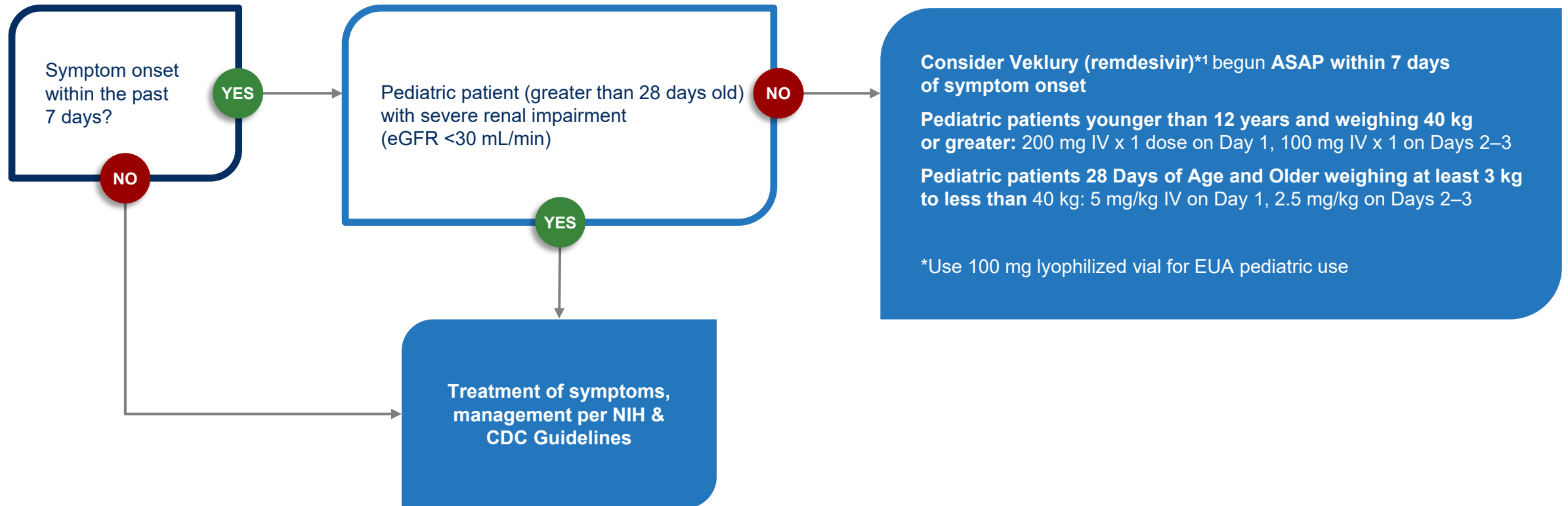
<sup>6</sup> Lagevrio EUA. <https://www.fda.gov/media/155054/download>



# COVID-19 Outpatient Therapeutics

## Clinical Decision Aid for Ages 28 days to less than 12 years

Pediatric patient (28 days of age to less than 12 years, weighing at least 3 kg to less than 40 kg) with mild to moderate COVID-19 and at high risk for progression to severe disease



**Reference:**

<sup>1</sup> Veklury Prescribing Information: [https://www.gilead.com/-/media/files/pdfs/medicines/covid-19/veklury/veklury\\_pi.pdf](https://www.gilead.com/-/media/files/pdfs/medicines/covid-19/veklury/veklury_pi.pdf)